

| REVISIONS |             |      |          |
|-----------|-------------|------|----------|
| REV       | DESCRIPTION | DATE | APPROVAL |
|           |             |      |          |

PRODUCT: \_\_\_\_\_

CONFIGURATION: \_\_\_\_\_

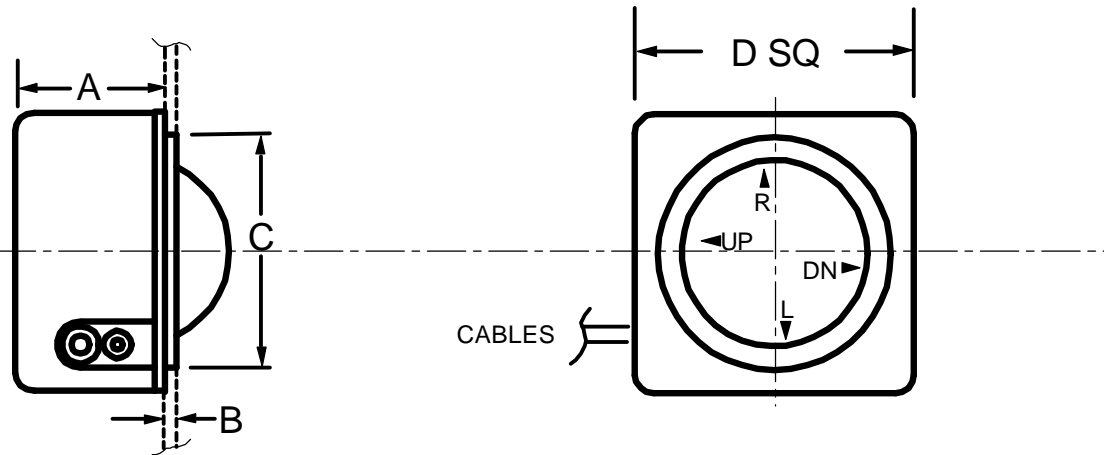
MOUSE BUTTON WIRING CODE

SW1 (LEFT) \_\_\_\_\_

SW2 (MIDDLE) \_\_\_\_\_

SW3 (RIGHT) \_\_\_\_\_

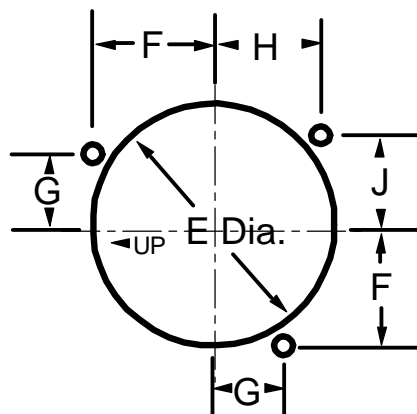
COMMON (GND) \_\_\_\_\_



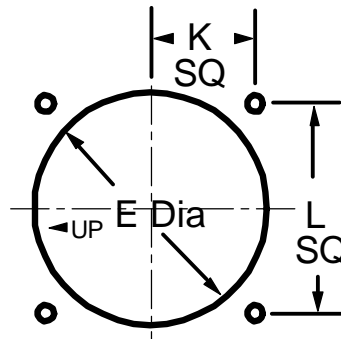
DIAMOND PANEL MOUNT  
TRACKBALL SERIES

|              | PM150 | PM200 | PM225 | PM300 |
|--------------|-------|-------|-------|-------|
| A            | 1.600 | 1.600 | 2.000 | 2.200 |
| B            | 0.130 | 0.130 | 0.180 | 0.130 |
| C            | 1.810 | 2.500 | 2.600 | 3.500 |
| D            | 2.250 | 3.000 | 3.600 | 5.000 |
| E            | 1.810 | 2.500 | 2.630 | 3.500 |
| F            |       |       | 1.300 |       |
| G            |       |       | 0.750 |       |
| H            |       |       | 1.150 |       |
| J            |       |       | 0.963 |       |
| K            | 0.840 | 1.125 |       | 1.938 |
| L            | 1.688 | 2.250 |       | 3.875 |
| SCREW SIZE   | 4-40  | 4-40  | 6-32  | 6-32  |
| SCREW DEPTH  | 0.375 | 0.375 | 0.375 | 0.375 |
| PANEL CUTOUT | B     | B     | A     | B     |
| BALL SIZE    | 1.50  | 2.00  | 2.25  | 3.00  |

DIMENSION  
(INCHES)



PANEL  
CUTOUT A



PANEL  
CUTOUT B

INSTALLATION FOR FIXED BEZEL  
(NON-REMOVABLE)

SEE SHEET 2 FOR INSTALLATION OF  
UNITS WITH REMOVABLE BEZEL

**EVERGREEN**

4740 CALLE QUETZAL, CAMARILLO, CA 93012

|        |              |           |
|--------|--------------|-----------|
| SCALE: | APPROVED BY: | DRAWN BY: |
| DATE:  |              | REVISED:  |

INSTALLATION DWG. PANEL MOUNT

|       |         |                          |
|-------|---------|--------------------------|
| OFST8 | SHEET 1 | DRAWING NUMBER<br>100750 |
|-------|---------|--------------------------|